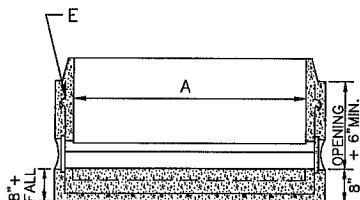


PIPE DIAMETER	DIMENSION			
	A	B	C	D
8" THRU 18"	48"	5"	2"-3"	UP TO 1 1/2"
21" & 24"	48"	5**	2"-3"	"
	60"	6**	2"-3"	"
27" - 36"	60"	6"	2"-3"	UP TO 1 1/2"

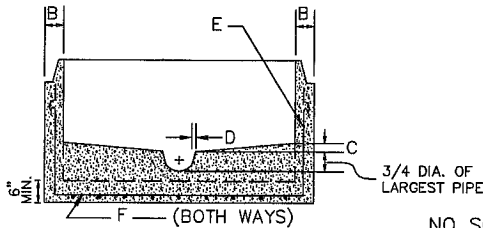
* MOVEABLE PANEL CONSTRUCTION MAY BE USED PROVIDING 5" MIN. THICKNESS PROVIDED.

REINFORCEMENT STEEL PER A.S.T.M. C478

DIAMETER	REINFORCING ITEM	
	E	F
48"	A ^s = 0.12 SQ. IN./FT. (CIRCUMFERENTIAL)	A ^s = 0.12 SQ. IN./FT. (BOTH WAYS)
60"	A ^s = 0.15 SQ. IN./FT. (CIRCUMFERENTIAL)	A ^s = 0.12 SQ. IN./FT. (BOTH WAYS)



SECTION A-A



SECTION B-B

PRECAST MANHOLE BASE MAY BE USED ON 8" TO 36" CONDUIT UNLESS OTHERWISE NOTED ON THE PLANS.

PRECAST MANHOLE BASE SHALL NOT BE USED IF THE GRADE OF THE INFLUENT OR EFFLUENT CONDUIT EXCEEDS 10%, UNLESS THE SEAL BETWEEN THE PRECAST MANHOLE BASE AND INFLUENT AND/OR EFFLUENT LINES IS CAST IN A SKEW TO ACCEPT LARGER GRADES. ALL MATERIAL SHALL BE IN ACCORDANCE WITH SECTION 706.13 OF THE STATE OF OHIO SPECIFICATIONS EXCEPT AS OTHERWISE NOTED HEREIN.

ALL CONCRETE SHALL BE OCT.

THE GASKET BETWEEN THE PRECAST MANHOLE BASE AND THE MANHOLE RISERS SHALL MEET THE REQUIREMENTS OF A.S.T.M. C-443, EXCEPT THAT ONLY "O" RING AND PROFILE GASKETS ARE ACCEPTABLE.

THE SEAL BETWEEN PRECAST MANHOLE BASE AND INFLUENT AND/OR EFFLUENT CONDUIT SHALL BE A RUBBER GASKET, "A-LOK", "KOR-N-SEAL", "DURA-SEAL" OR AN APPROVED EQUAL.

OPENINGS FOR INFLUENT AND EFFLUENT CONDUIT SHALL BE PROVIDED TO MEET THE PROJECT REQUIREMENTS.

THE PRECAST BASE SHALL HAVE THE FLOOR AND SIDE WALL CAST AS ONE UNIT; IF THE FLOW LINE (CHANNEL) AND BENCHES ARE NOT CAST AS A PART OF FLOOR AND SIDE WALL, THEY SHALL BE CAST OF CONCRETE AT THE PLACE OF MANUFACTURE.

LIFT HOLES IN PRECAST MANHOLE BASE TO BE SEALED WITH HYDRAULIC CEMENT AND THE EXTERIOR COATED WITH A BITUMINOUS PAINT.

ALL CHARACTERISTICS NOT SHOWN HEREON SHALL BE SIMILAR TO STANDARD MANHOLE ACC. NO. 49001.

PRECAST MANHOLE BASES SHALL BE INSTALLED ON A 6" MINIMUM GRAVEL BASE (#57 CLEAN WASHED).

NO STEPS REQUIRED IN MANHOLE SECTIONS.

CITY OF CINCINNATI
METROPOLITAN SEWER DISTRICT
STORMWATER MANAGEMENT UTILITY

STANDARD
PRECAST CONCRETE
MANHOLE BASE

NO SCALE

APPROVED

AUGUST, 2014

SMU CHIEF ENGINEER

ACC. NO. 49056