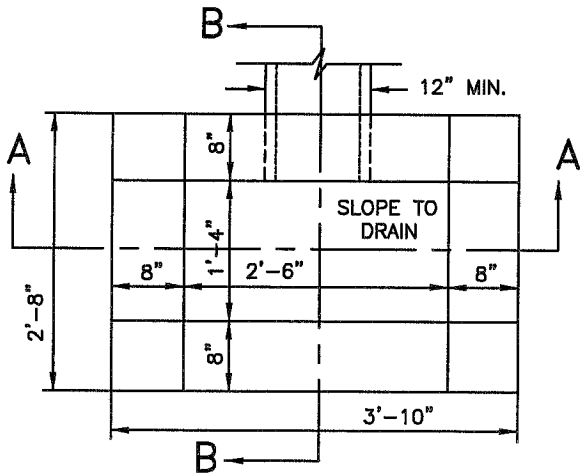


SECTION A-A

SECTION B-B



PLAN VIEW
W/TOP REMOVED

NOTE: THE INLET IS SHOWN OPEN ON FOUR SIDES. ANY OF THESE MAY BE CLOSED AS DIRECTED BY THE ENGINEER

WALL REINFORCING STEEL		
DEPTH	BAR	SPACING
4 TO 6'	#3	@ 16"
8 TO 12'	#5	@ 12"
12 TO 16'	#5	@ 8"

Inlet chamber shall be built of concrete in accordance with ODOT Specifications in the City Supplement or precast, see reinforcing steel notes Acc No. 49010.

Pipes shall not enter within 8" of corner.

For standard castings see Acc. No. 49012

CITY OF CINCINNATI
METROPOLITAN SEWER DISTRICT
STORMWATER MANAGEMENT UTILITY

**STANDARD
DITCH INLET
PLAN D.I.**

NO SCALE
APPROVED

[Signature]
SMU CHIEF ENGINEER

AUGUST, 2014

ACC. NO. 49023