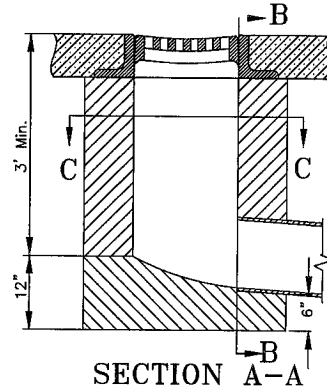
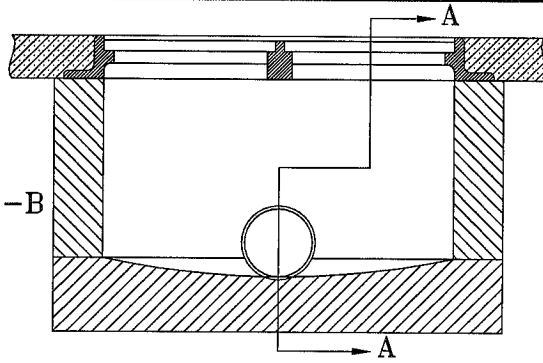


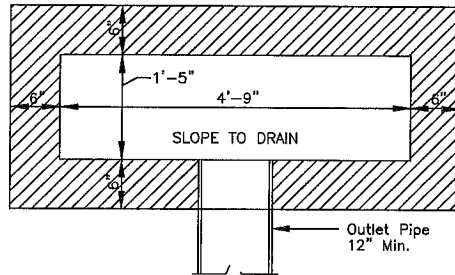
SECTION B-B



SECTION A-A

For Standard Castings See Acc. No. 49022

SECTION C-C



INLET CHAMBER SHALL BE BUILT OF CONCRETE IN ACCORDANCE WITH ODOT SPECIFICATIONS IN THE CITY SUPPLEMENT OR PRECAST, SEE REINFORCING STEEL NOTES ACC. NO. 49010

PIPES SHALL NOT ENTER WITHIN 8" OF CORNER

CITY OF CINCINNATI
METROPOLITAN SEWER DISTRICT
STORMWATER MANAGEMENT UTILITY

**STANDARD
DOUBLE VALLEY INLET
PLAN D.V.I.**

NO SCALE

AUGUST, 2014

APPROVED

M. J. [Signature]
SMU CHIEF ENGINEER

ACC. NO. 49021