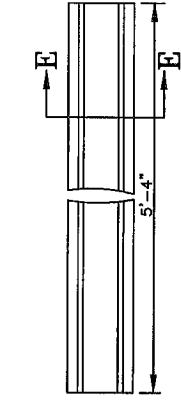
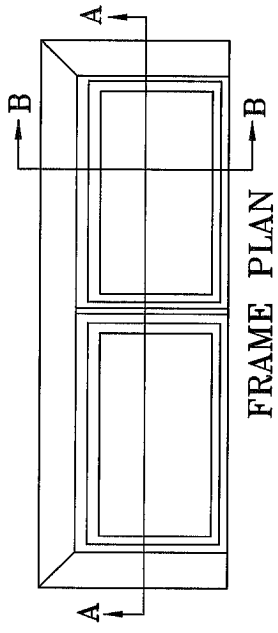


SUPPORT BEAM



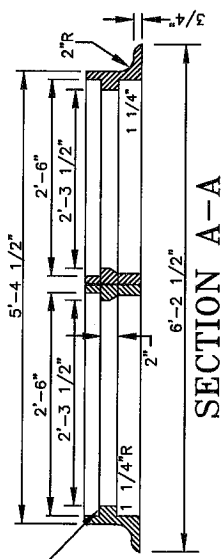
SECTION E-E



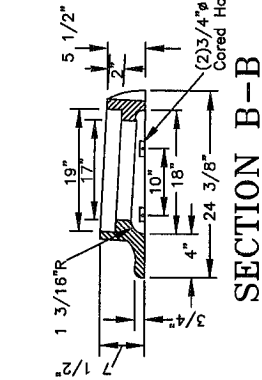
FRAME PLAN

FOR MEASUREMENTS, MATERIAL FINISH, AND INSPECTION REFER TO PURCHASING SPEC. NO. 11-34 (Latest Edition)

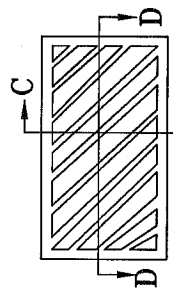
NOTE: Frame to be chipped to full bearing.



SECTION A-A



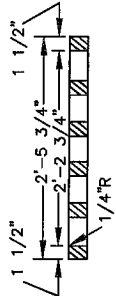
SECTION B-B



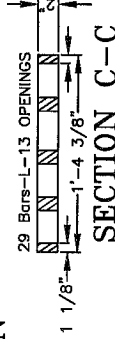
GRATING PLAN

2 GRATINGS REQUIRED

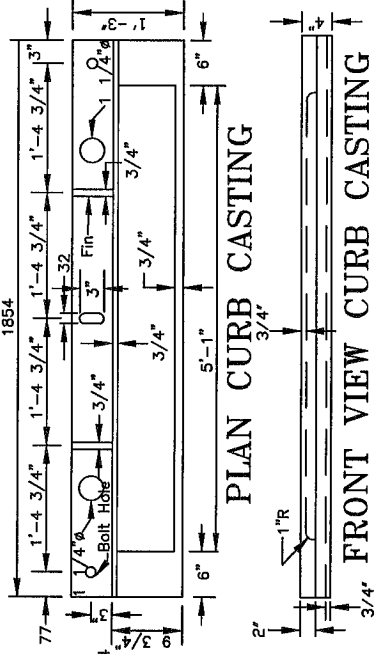
NOTE: Frame to be chipped to full bearing.



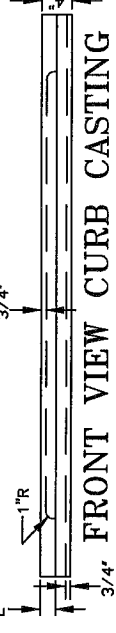
SECTION D-D



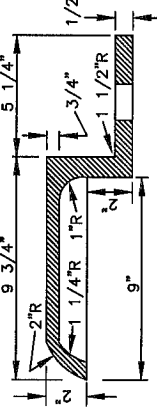
SECTION C-C



PLAN CURB CASTING



FRONT VIEW CURB CASTING



END VIEW CURB CASTING

CITY OF CINCINNATI
METROPOLITAN SEWER DISTRICT
STORMWATER MANAGEMENT UTILITY

STANDARD CASTINGS
COMBINATION INLET

NO SCALE
APPROVED

AUGUST, 2014
SMU CHIEF ENGINEER

A.D.J.

ACC. NO. 49017