

CITY OF CINCINNATI  
 METROPOLITAN SEWER DISTRICT  
 STORMWATER MANAGEMENT UTILITY

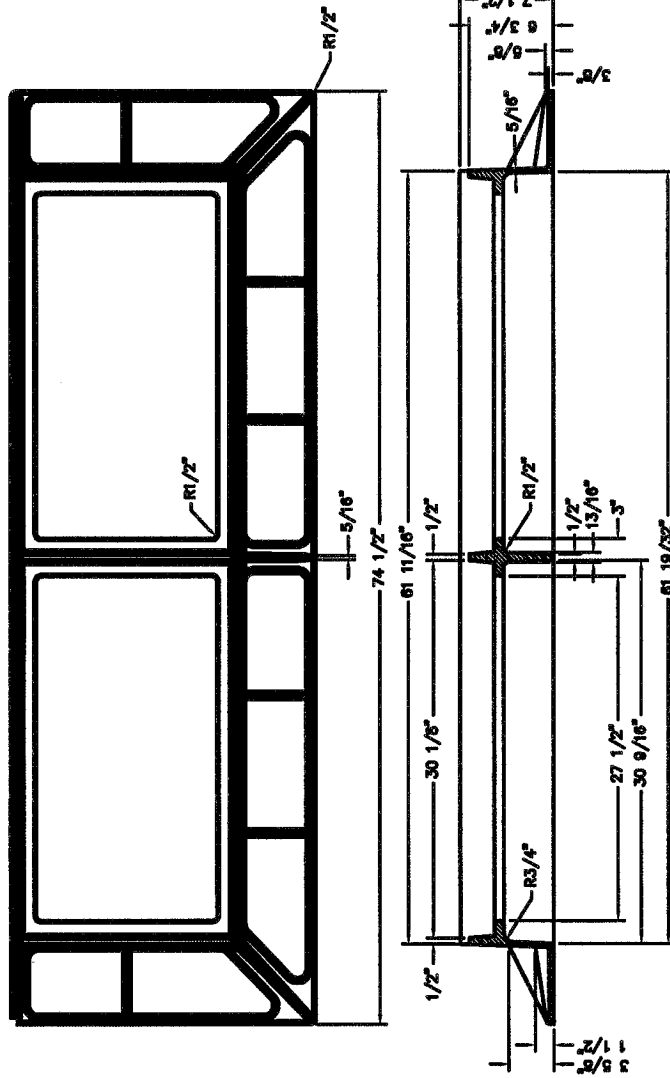
**STANDARD  
 CASTINGS DOUBLE  
 GUTTER INLET**

NO SCALE  
 APPROVED

*[Signature]*  
 August, 2014

SMU CHIEF ENGINEER

ACC. NO. 49014



MATERIAL: CAST GRAY IRON ASTM A-48, CLASS 35B  
 FINISH: NO PAINT  
 WEIGHT: APPROX 282 LBS.