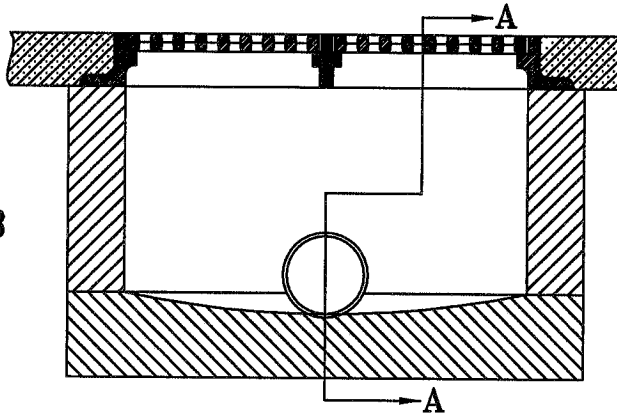
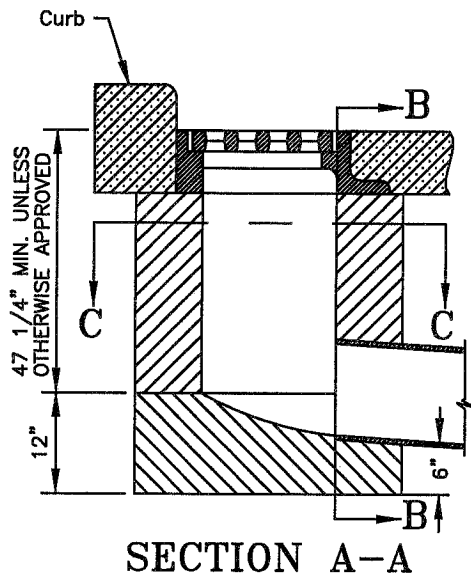
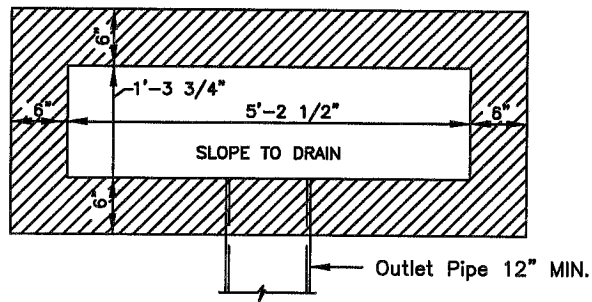


**SECTION B-B**

For Standard Castings see Acc. No. 49014



**SECTION C-C**



Inlet chamber shall be built of concrete in accordance with ODOT Specification in the City Supplement, see reinforcing steel notes Acc. No. 49010

For setting of Inlet Box and castings see Acc. 49015

Pipes shall not enter within 8" of corner

CITY OF CINCINNATI  
METROPOLITAN SEWER DISTRICT  
STORMWATER MANAGEMENT UTILITY

**STANDARD  
DOUBLE GUTTER INLET  
PLAN D.G.I**

NO SCALE

AUGUST, 2014

APPROVED

*[Signature]*  
SMU CHIEF ENGINEER

A.D.J.

**ACC. NO. 49013**