

10 - #5 BARS @ 3" O.C. 5'-10" LONG  
 9 - #5 BARS @ 3" O.C. 2'-8" LONG  
 BOTTOM CLEARANCE 2"

**NOTES**

CONCRETE SLAB MAY BE PRECAST WITH LIFT HOLES 12" FROM EACH END. MARK TOP OF SLAB.

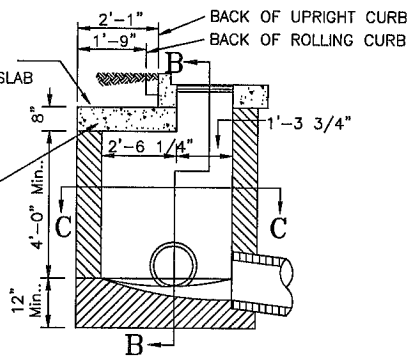
INLET CHAMBER SHALL BE BUILT OF CONCRETE OR BRICK MASONRY IN ACCORDANCE WITH ODOT SPECIFICATIONS IN THE CITY SUPPLEMENT OR PRECAST USING REINFORCING STEEL CHART.

FOR PAVEMENT DETAIL SEE ACC. NO. 49015 PIPES SHALL NOT ENTER WITHIN 8" OF CORNER.

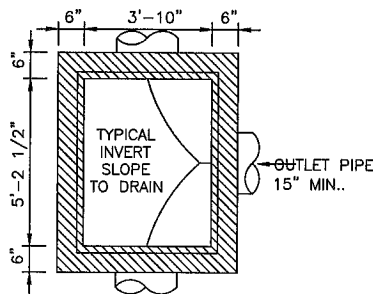
ALL BARS SHALL CLEAR INTERIOR FACE OF WALL BY 2". BOX LENGTHS SHALL BE 5'-10" FOR THE LONGER SIDE AND 4'-7" FOR THE SHORTER SIDE. VERTICAL REINFORCING BARS SHALL BE #5 AND PLACE 22" O.C. FOUR OF THESE BARS SHALL BE LOCATED AT THE CORNERS OF THE CHAMBER.

NO BRICK OR BLOCK IS PERMITTED UNLESS SMU AUTHORIZES IT IN WRITING.

ALL PENETRATIONS ON PRE-CAST MUST BE MANUFACTURED AND NO LARGER THAN 2" ON EACH SIDE OF THE OUTSIDE DIAMETER.

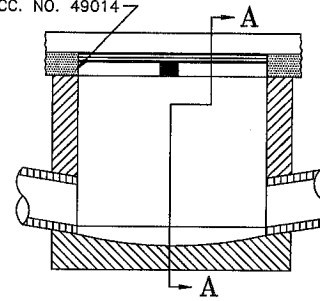


**SECTION A-A**



**SECTION C-C**

STANDARD CASTINGS  
 ACC. NO. 49014



**SECTION B-B**

WALL HORIZONTAL REINFORCING STEEL	
DEPTH	BAR SPACING
4' TO 8'	#5 @ 16"
8' TO 12'	#5 @ 12"
12' TO 16'	#5 @ 8"

CITY OF CINCINNATI  
 METROPOLITAN SEWER DISTRICT  
 STORMWATER MANAGEMENT UTILITY

**STANDARD  
 DOUBLE GUTTER INLET M.H.  
 PLAN D.G.I.M.H.**

NO SCALE

AUGUST, 2014

APPROVED

*[Signature]*  
 SMU CHIEF ENGINEER

A.D.J.

**ACC. NO. 49010**