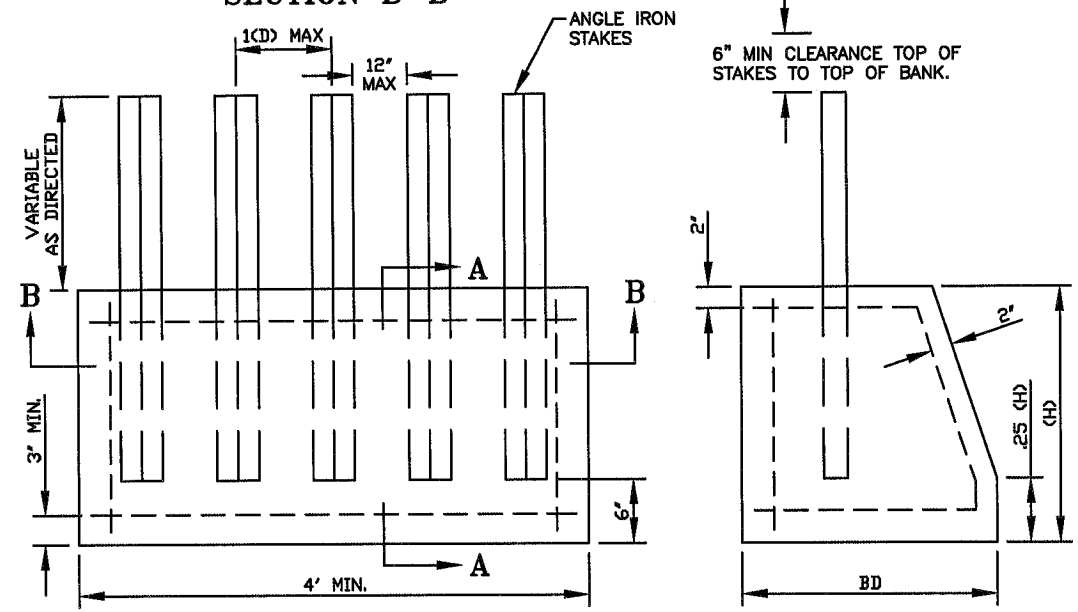


**SECTION B-B**



**SECTION A-A**

ANGLE IRON STAKES			
CONDUIT SIZE (D)	SIZE	HEIGHT (H)	THICKNESS (t)
12"	3' X 3'	24"	3/8"
15"	3' X 3'	24"	3/8"
18"	3' X 3'	38"	3/8"
24" AND OVER	5' X 5'	48"	1/2"

NOTES:

ALL ANGLES - A 36 GALVANIZED STEEL TOP OF CONCRETE ANCHOR SET A CREEK BED ELEVATION.

ALL ANGLES ARE 92°

BD (BASE DIMENSION) SHALL EQUAL HEIGHT (H) OF CONCRETE ANCHOR

(D) INDICATES INTAKE CONDUIT SIZE. CROSSBARS AS DIRECTED.

CITY OF CINCINNATI  
METROPOLITAN SEWER DISTRICT  
STORMWATER MANAGEMENT UTILITY

**STANDARD  
INTAKE TRASH RACK**

NO SCALE  
APPROVED

AUGUST, 2014  
*Michael J. [Signature]*  
SMU CHIEF ENGINEER

A.D.J.

ACC. NO. 120090