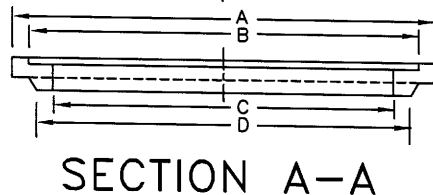


DETAIL
SECTION A-A



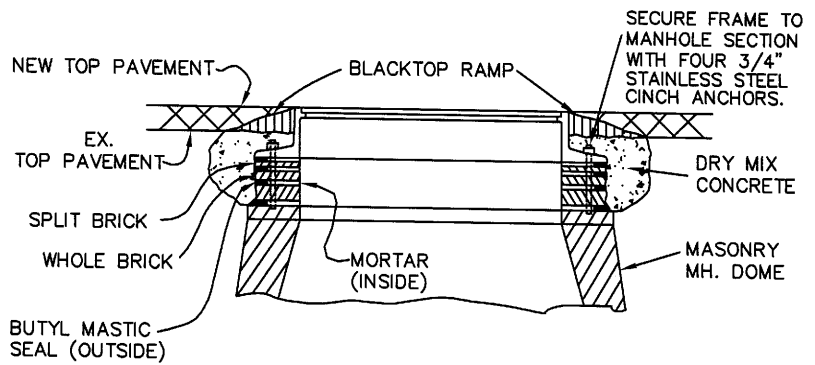
SECTION A-A

CASTING	DIMENSIONS IN INCHES									
	A	B	C	D	E	F	G	H	J	
MANHOLE	26	24	21½	23¾	1½	2	2½	3	1	

MATERIAL - ASTM DESIGNATION: A-48, CLASS 40 CAST IRON

INSTALLATION OF SHIM RING

1. CLEAN CASTING WITH WIRE BRUSH.
 2. INSERT SHIM AND CHECK FIT.
 3. IF SHIM DOES NOT FIT PROPERLY, CASTING SHALL BE ADJUSTED BY USING BRICK AND MORTAR.
 4. REMOVE SHIM AND APPLY JOINT SEALER COMPOUND TO CASTING SEATING SURFACE.
 5. INSERT SHIM ON CASTING - STACKING OF RINGS SHALL NOT BE PERMITTED.
 6. USE PAVING BREAKER TO CUT OUT AROUND CASTING, 6"W. X 1 1/2"D.
 7. ADD STORAGE MIX BLACKTOP TO CUT AND FORM RAMP TO LIP OF CASTING. TAMP FIRMLY. RAMP SHALL BE REMOVED IMMEDIATELY PRIOR TO MACHINE PAVING.
 8. ALL MANHOLE FRAMES AND COVERS, OTHER THAN STANDARD, SHALL BE REPLACED WITH STANDARD CASTINGS. (ACC. NO. 49005)
- Δ IN ACCORDANCE WITH 706.10 OF THE STATE OF OHIO CONSTRUCTION AND MATERIALS SPECIFICATION.



INSTALLATION OF BRICK AND MORTAR

1. ALL MANHOLES ADJUSTED WITH BRICK AND MORTAR PRIOR TO MACHINE PAVING ARE PERMITTED TO BE ROUND CUT.
 2. IF NEW ADJUSTMENT OF MANHOLE ELEVATES CASTING GREATER THAN 12" ABOVE DOME SECTION OF MANHOLE, THAT MANHOLE SHALL BE RECONSTRUCTED IN ACCORDANCE WITH 604.03 OF THE CITY SUPPLEMENT OF THE STATE OF OHIO CONSTRUCTION AND MATERIAL SPECIFICATIONS.
 3. IF NEW ADJUSTMENT OF EXISTING MANHOLE IS LESS THAN 12" ABOVE DOME, THE CASTING SHALL BE CUT OUT TO TOP OF EXISTING MASONRY.
 4. THE CASTING SHALL THEN BE RAISED WITH A COMBINATION OF WHOLE AND/OR HALF BRICKS AND MORTAR TO DESIRED HEIGHT. THESE ADJUSTMENTS SHALL BE IN ACCORDANCE WITH 604.05 OF THE STATE OF OHIO CONSTRUCTION AND MATERIALS SPECIFICATIONS.
 5. DRY MIX CONCRETE SHALL BE USED FROM BOTTOM OF CUT TO EXISTING STREET PAVEMENT.
 6. ADD STORAGE MIX BLACKTOP TO FORM RAMP TO LIP OF CASTING. TAMP FIRMLY. RAMP SHALL BE REMOVED IMMEDIATELY PRIOR TO MACHINE PAVING.
 7. ALL MANHOLE FRAMES AND COVERS, OTHER THAN STANDARD, SHALL BE REPLACED WITH STANDARD CASTINGS. (ACC. NO. 49005)
- NOTE: BRICK & MORTAR ADJUSTMENT CAN ONLY BE USED WITH SPECIAL PERMISSION FROM THE SEWERS CHIEF ENGINEER. (SEE ACC. NO. 49058-A FOR TYPICAL MANHOLE ADJUSTMENT STANDARD.)

THE
METROPOLITAN SEWER DISTRICT
OF
GREATER CINCINNATI
**SANITARY MANHOLE ADJUSTMENT
USING BRICK AND MORTAR
PRIOR TO MACHINE PAVING**

NO SCALE DATE: AUG., 2006
APPROVED:  SEWERS CHIEF ENGINEER

(FORMERLY ACC. NO. 53941)

ACC. NO. 49058