



## PRESS RELEASE

### FOR IMMEDIATE RELEASE

November 15, 2017

**MSD MEDIA CONTACT:** Deb Leonard at (513) 557-7095 (office), (513) 316-7510 (mobile), or [Deb.Leonard@cincinnati-oh.gov](mailto:Deb.Leonard@cincinnati-oh.gov)

**GCWW MEDIA CONTACT:** Stephanni Schweitzer at (513) 591-7891 (office), (513) 817-9743 (mobile), or [Stephanni.Schweitzer@gcww.cincinnati-oh.gov](mailto:Stephanni.Schweitzer@gcww.cincinnati-oh.gov)

### **TRAFFIC ALERT: Lick Run Greenway**

*Traffic Pattern Change on Westwood Avenue near White Street:  
~ November 20 thru End of 2017*

*Traffic Pattern Change on Queen City Bypass near White Street:  
~ Early December 2017 thru January 2018*

CINCINNATI – Construction of the nationally recognized Lick Run Greenway project in South Fairmount began in early July 2017 and will continue through fall 2019. The \$89.9 million Greenway includes a mile-long bioengineered creek in a park-like setting through the valley corridor.

This project will impact traffic in South Fairmount throughout the course of construction, including full road closures and lane restrictions. All work is weather and schedule dependent. The latest traffic pattern changes are outlined below:

#### **Traffic Pattern Change – Westwood Avenue**

From about November 20, 2017 through the end of 2017, traffic traveling on Westwood Avenue near White Street will shift to the north using an additional temporary eastbound lane. Please see attached map.

This will allow Greater Cincinnati Water Works (GCWW) to begin relocating a large water main to make room for the Lick Run Greenway project. The traffic pattern will return to normal upon completion of this work.

Drivers are encouraged to use caution when approaching the traffic pattern change and are reminded to use alternate routes around the area if possible.

### **Traffic Pattern Change – Queen City Bypass**

From about early December 2017 through January 2018, traffic traveling on the Queen City Bypass near White Street will divert to two temporary westbound lanes. Please see attached map.

This will allow GCWW to complete the relocation of its water main. The traffic pattern will return to normal upon completion of this work.

Drivers are encouraged to use caution when approaching the traffic pattern change and are reminded to use alternate routes around the area if possible.

At some point following the water main relocation, MSD will install an underground stormwater conveyance box in this same area, and traffic will again be diverted to the two temporary westbound lanes. A press release will be issued for this change.

**NOTE: These traffic pattern changes are in addition to all current changes, including:**

- Closure of southbound State Avenue between Beekman Street and Cincinnati Fire Station 21, and northbound State Avenue between Harrison Avenue and Beekman Street reduced to one lane through spring 2018.
- Closure of northbound Harrison Avenue between Westwood and Queen City avenues through early 2018.
- Closure of Van Hart Street between Westwood and Queen City avenues through early 2018.
- Closure of Kebler Street between Westwood and Queen City avenues through late 2017.
- Various temporary lane restrictions along Queen City Avenue, Westwood Avenue, State Avenue and other streets in the area for the relocation of utilities and/or construction of new sewer segments.

For additional information about this project, please visit the Lick Run website at [www.projectgroundwork.org/lickrun](http://www.projectgroundwork.org/lickrun) and click on Lick Run Greenway under Quick Links.

For an archive of all press releases on this project, please visit the Lick Run website at [www.projectgroundwork.org/lickrun](http://www.projectgroundwork.org/lickrun) and click on Construction & Traffic Info under Quick Links.

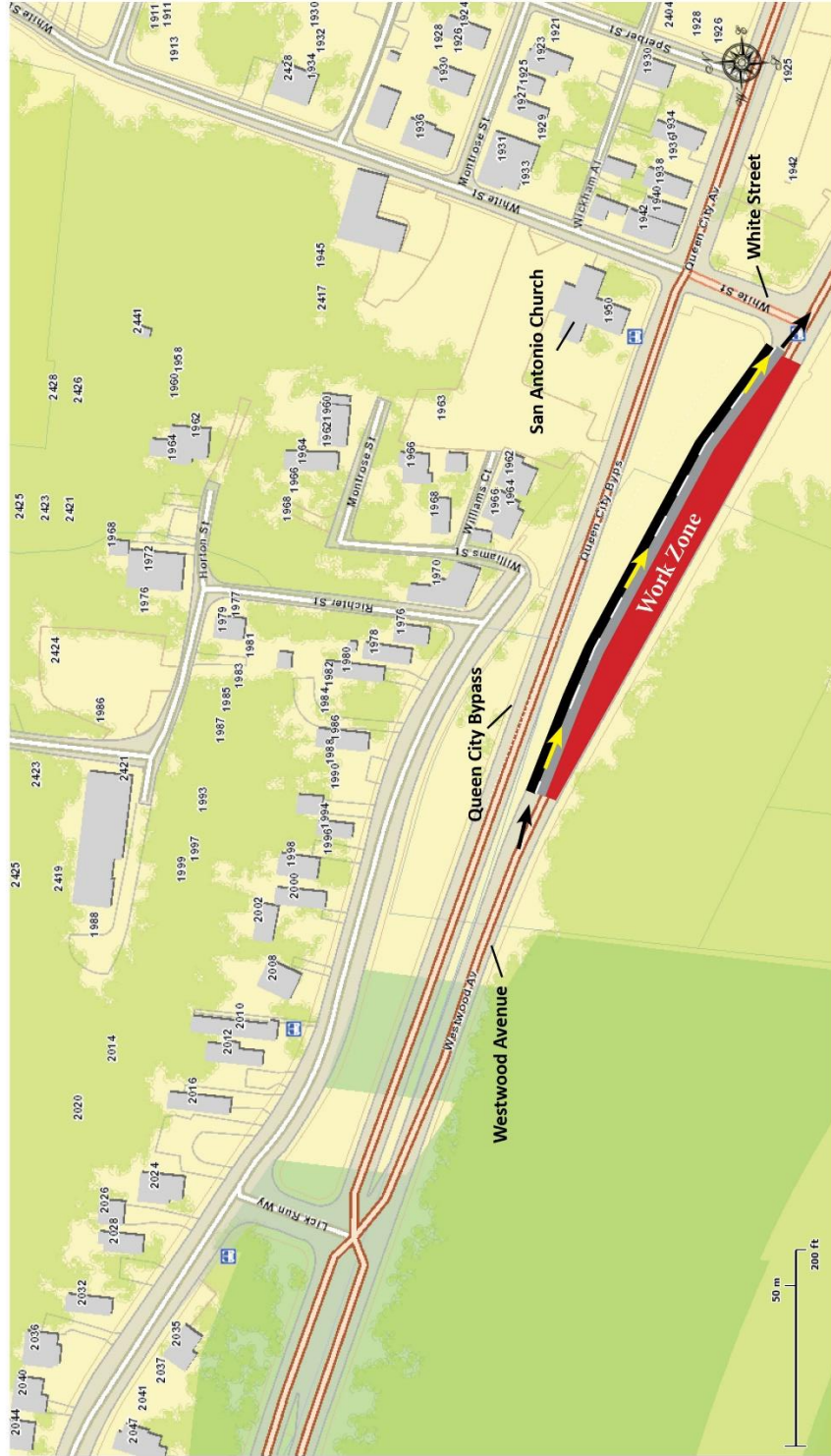
To sign up for Lick Run Project email updates or to discuss customer issues, please contact MSD Engineering Customer Service at (513) 557-3594 or [MSD.Communications@cincinnati-oh.gov](mailto:MSD.Communications@cincinnati-oh.gov).

Please follow MSD at @CincinnatiMSD on Twitter for the latest schedule/traffic updates.

###

# Traffic Maps:

Traffic Pattern Change on Westwood Avenue



# Traffic Pattern Change on Queen City Avenue

