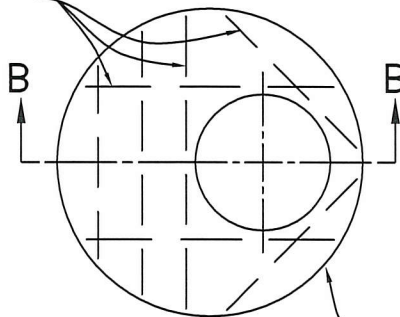
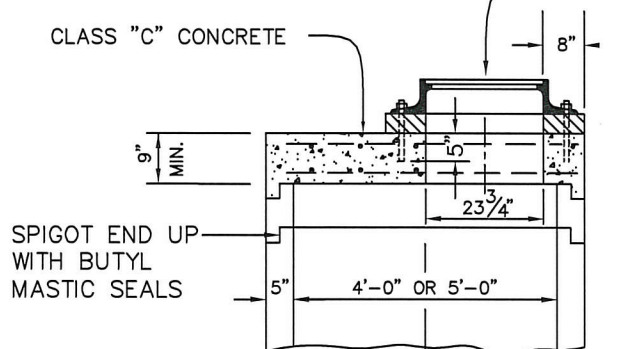


#6 BARS  
TOP &  
BOTTOM



FLATTOP MANHOLE PER  
ACC. NO. 49049 TYPE "B"

CLASS "C" CONCRETE



SPIGOT END UP  
WITH BUTYL  
MASTIC SEALS

STANDARD TYPE "T" MANHOLE BASE  
(ACC. NO. 49040 OR 49040-A)

SECTION A-A

NOTES:

PRECAST CONCRETE BARRELS SHALL BE IN ACCORDANCE WITH ITEM 706.13 OF THE SPECIFICATIONS.

JOINTS ON MANHOLE SECTIONS SHALL BE MADE WITH A RUBBER GASKET MEETING THE REQUIREMENT OF ASTM C-443, EXCEPT THAT ONLY "O" RING AND PROFILE GASKETS ARE ACCEPTABLE.

LIFT HOLES IN MANHOLES TO BE SEALED WITH HYDRAULIC CEMENT.

1' PRECAST MANHOLE SECTION TO BE SET WHEN MANHOLE TOP IS POURED.

ALL CONCRETE SHALL BE CLASS "C".

ALL REINFORCING STEEL SHALL HAVE A MINIMUM COVER OF 1 1/2" BOTH FACES.

STEPS CONSTRUCTED OF RUBBER COATED CAST IRON, STAINLESS STEEL, OR FIBER REINFORCED PLASTIC SHALL BE PROVIDED ON ALL MANHOLES.

THE  
METROPOLITAN SEWER DISTRICT  
OF  
GREATER CINCINNATI  
**MODIFIED  
TYPE "T"  
MANHOLES**

NO SCALE

DATE: DEC. 2010

APPROVED:

*Ralph J. [Signature]*  
SEWERS CHIEF ENGINEER

M.C.

ACC. NO. 49048